



56acraw

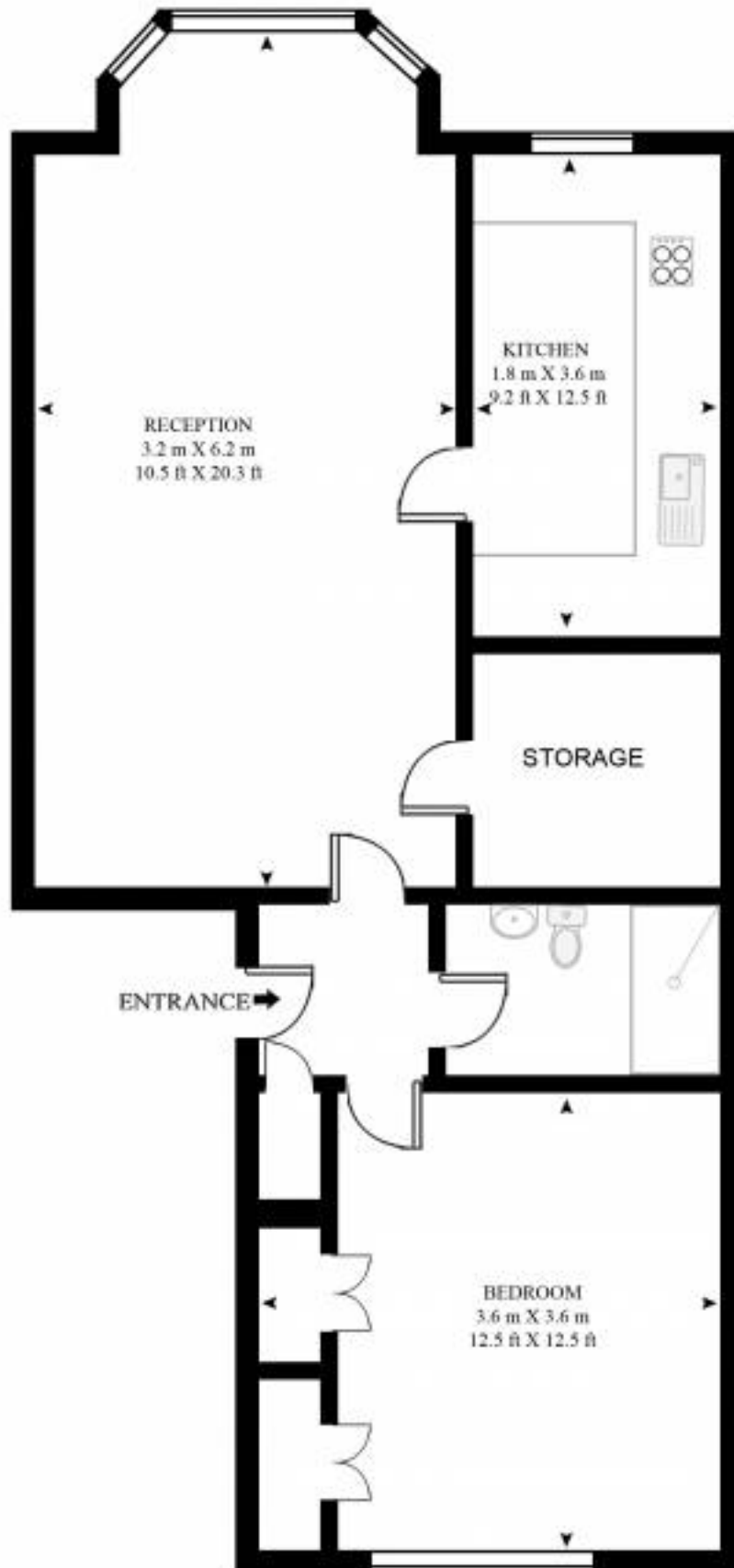
Spacious one bedroom flat with separate kitchen brand new bathroom, large reception, double bedroom and communal garden. The flat is well located for Baker Street, Edgware Road and Marylebone.

Price: £385.00

: Crawford Street W1, London

CRAWFORD STREET

APPROXIMATE GROSS INTERNAL FLOOR AREA 512 SQ.FT (47.6 SQ.M)



Contacts

Address: 17 Nottingham Street
London W1U 5EW

Telephone no: + 44 (0) 20 7486 5742
Mobile: +44 (0) 7979452755

Lettings@marilynryant.com
